

Etobicoke School of the Arts



Performance:

Team list and program

Creative Team: Patricia Warnock, Kerry Gage, Michael Vieira

Student Leaders: Maya Thomas, Callum Thompson

Company Managers: Sophia Wennekers, Gaia Friedman

Performers list: Amelia Miville-Dechene, Ava Grovestine, Benjamin Zumbansen, Cassidy Woodward, Charlie White, Daniel Park, Elliott Teague, Eva Altenkirch, Farrah Collins, Frank Willer, Gigi Zollerano, Isabel Silva, Isidor Kennedy, Jamie Collin, Jester Henry-Foussias, Kyra Mcglaughlin, Lauren Raposo, Lily Westsmith, Lucy Crow, Maya Thomas, Mia Delasa, Nate Bernstein, Noah Gurevitz, Paige Ivan, Sebastian Gonzalez, Seyara Rambukkanage, Thomas Winiker and Valeria Franco.

Set #1 (10 minutes)

Pop Medley (Let's get it Started, Born this Way, Applause)

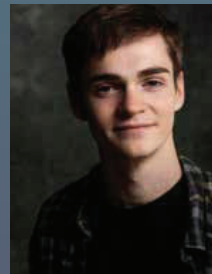
Fall on Me

Blow - Splash Ensemble

Set #2 (6-7 minutes)

Ain't no Mountain High Enough Duet sung by Maya Thomas and Thomas Winiker

Like Breathing - Splash Ensemble



Callum Thompson

Callum is an 18 year old actor and dancer based in Toronto. Callum has trained in dance and the arts for over a decade and has been part of many shows onstage and on camera. Callum is a recent graduate of ESA's Music Theatre Program. Callum has always loved being a part of shows onstage and behind the scenes.



Maya Thomas

Maya Thomas is a Musical Theatre student attending Etobicoke School of the Arts. Dancing since age 3, she studied at Randolph Academy, Interplay and Dark Dance, taking Jazz, Tap, Ballet, Contemporary, Acro and Hip Hop classes. Maya was a member of pop group 'Girl Pow-R' performing in over 25 live shows across Ontario. She appeared in films such as 'Umbrella Girl', a commercial for Dairy Farmers of Ontario and Prilosec, and was recently a featured dancer in a commercial for Invisalign.

Maya is extremely honoured and excited to be involved in this event.